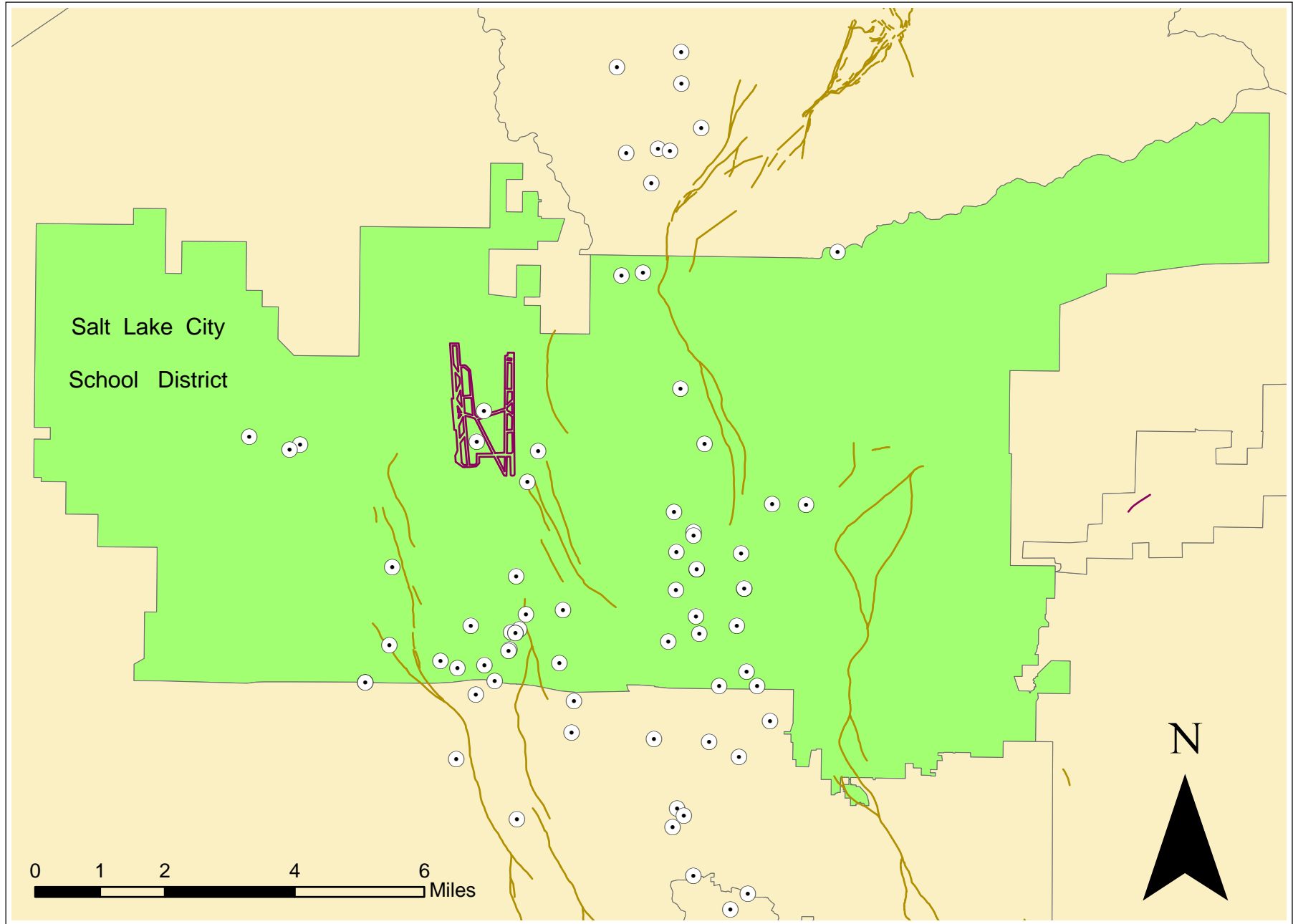


Toxic Release Points and Fault Lines Near SLC School District



Randy Hancock
Lab Assignment #5
Lab(3) - Wed - 12:55

Source Files:
1.Schooldistricts.e00 2.Toxicrelease.e00
3. Fault_arc.shp 4.Airports_shp.shp
3 & 4 were *.e00, then "Imported to Coverage" ->
"Coverage to Geodatabase" -> "GeoDB to shapefile".

